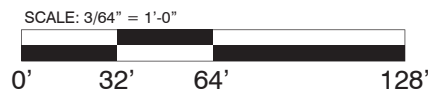
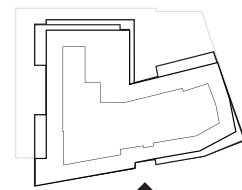


**MATERIALS**

- 1 - FRENCH GRAY WIRECUT FACE BRICK
- 2 - BUFF WIRECUT FACE BRICK
- 3 - COMPOSITE METAL PANEL
- 4 - COMPOSITE METAL PROFILE
- 5 - COMPOSITE METAL PANEL SOFFIT
- 6 - COMPOSITE METAL CANOPY
- 7 - PHENOLIC RAINSCREEN PANEL
- 8 - ALUMINUM PUNCHED WINDOW SYSTEM
- 9 - ALUMINUM WINDOW WALL SYSTEM
- 10 - ALUMINUM STOREFRONT SYSTEM WITH TRANSPARENT RETAIL GLASS
- 11 - ALUMINUM STOREFRONT SYSTEM WITH TRANSPARENT RESIDENTIAL GLASS
- 12 - ALUMINUM STOREFRONT SYSTEM WITH SPANDREL GLASS
- 13 - ALUMINUM TERRACE DOORS
- 14 - METAL PANEL REVEAL
- 15 - GUARDRAIL WITH PERFORATED METAL INFILL PANEL
- 16 - PERFORATED METAL WINDOW WALL INFILL PANEL
- 17 - OVERHEAD COILING DOOR
- 19 - VEGETATED ROOF



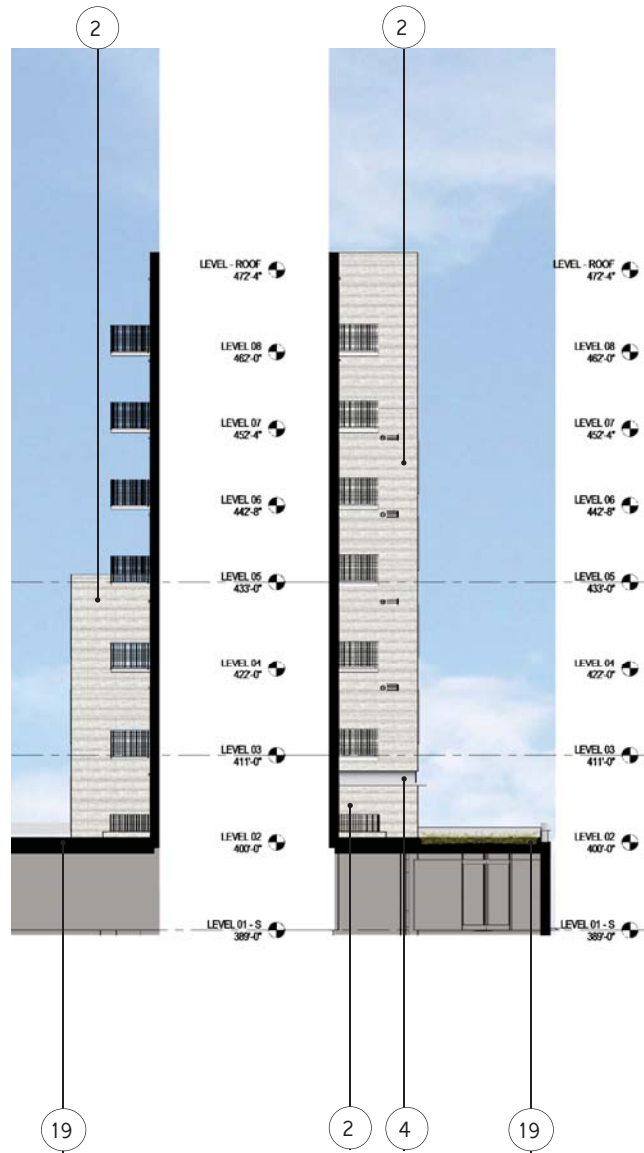
**EAST ELEVATION**



DATE:  
September 08, 2017

TITLE:  
BUILDING  
ELEVATION: EAST

NUMBER:  
**A-41**



**SOUTH COURT ELEVATIONS**



**SOUTH ELEVATION**

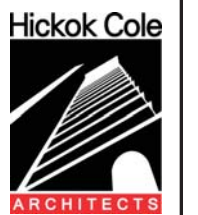
**MATERIALS**

- 1 - FRENCH GRAY WIRECUT FACE BRICK
- 2 - BUFF WIRECUT FACE BRICK
- 3 - COMPOSITE METAL PANEL
- 4 - COMPOSITE METAL PROFILE
- 8 - ALUMINUM PUNCHED WINDOW SYSTEM
- 9 - ALUMINUM WINDOW WALL SYSTEM
- 10 - ALUMINUM STOREFRONT SYSTEM WITH TRANSPARENT RETAIL GLASS
- 14 - METAL PANEL REVEAL
- 15 - GUARDRAIL WITH PERFORATED METAL INFILL PANEL
- 19 - VEGETATED ROOF



4620 WISCONSIN AVENUE NW

Square 1732 Washington DC 20016

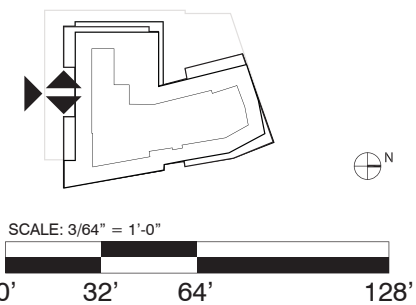


DATE: September 08, 2017

SUPPLEMENTAL PRE-HEARING SUBMISSION

TITLE: BUILDING ELEVATION: SOUTH

NUMBER: A-42



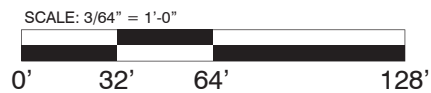
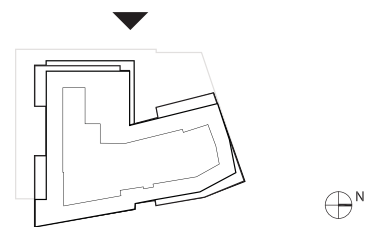


**MATERIALS**

- 1 - FRENCH GRAY WIRECUT FACE BRICK
- 2 - BUFF WIRECUT FACE BRICK
- 3 - COMPOSITE METAL PANEL
- 4 - COMPOSITE METAL PROFILE
- 8 - ALUMINUM PUNCHED WINDOW SYSTEM
- 11 - ALUMINUM STOREFRONT SYSTEM WITH TRANSPARENT RESIDENTIAL GLASS
- 12 - ALUMINUM STOREFRONT SYSTEM WITH SPANDREL GLASS
- 13 - ALUMINUM TERRACE DOORS
- 15 - GUARDRAIL WITH PERFORATED METAL INFILL PANEL
- 16 - PERFORATED METAL WINDOW WALL INFILL PANEL
- 17 - OVERHEAD COILING DOOR
- 19 - VEGETATED ROOF



**WEST ELEVATION:  
REAR ALLEY - SOUTH TOWER**



DATE:  
September 08, 2017  
SUPPLEMENTAL PRE-HEARING SUBMISSION

TITLE:  
BUILDING ELEVATION:  
REAR ALLEY AT SOUTH

NUMBER:  
**A-43**



**SOUTH ELEVATION:  
NORTH TOWER**

**WEST ELEVATION:  
REAR ALLEY - NORTH TOWER**

**MATERIALS**

- 1 - FRENCH GRAY WIRECUT FACE BRICK
- 2 - BUFF WIRECUT FACE BRICK
- 3 - COMPOSITE METAL PANEL
- 4 - COMPOSITE METAL PROFILE
- 8 - ALUMINUM PUNCHED WINDOW SYSTEM
- 9 - ALUMINUM WINDOW WALL SYSTEM
- 10 - ALUMINUM STOREFRONT SYSTEM WITH TRANSPARENT RETAIL GLASS
- 14 - METAL PANEL REVEAL
- 15 - GUARDRAIL WITH PERFORATED METAL INFILL PANEL
- 19 - VEGETATED ROOF



4620 WISCONSIN AVENUE NW

Square 1732  
Washington DC 20016



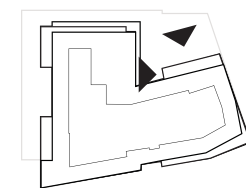
DATE:  
September 08, 2017

SUPPLEMENTAL PRE-  
HEARING SUBMISSION

TITLE:  
BUILDING  
ELEVATION:  
REAR ALLEY AT  
NORTH

NUMBER:

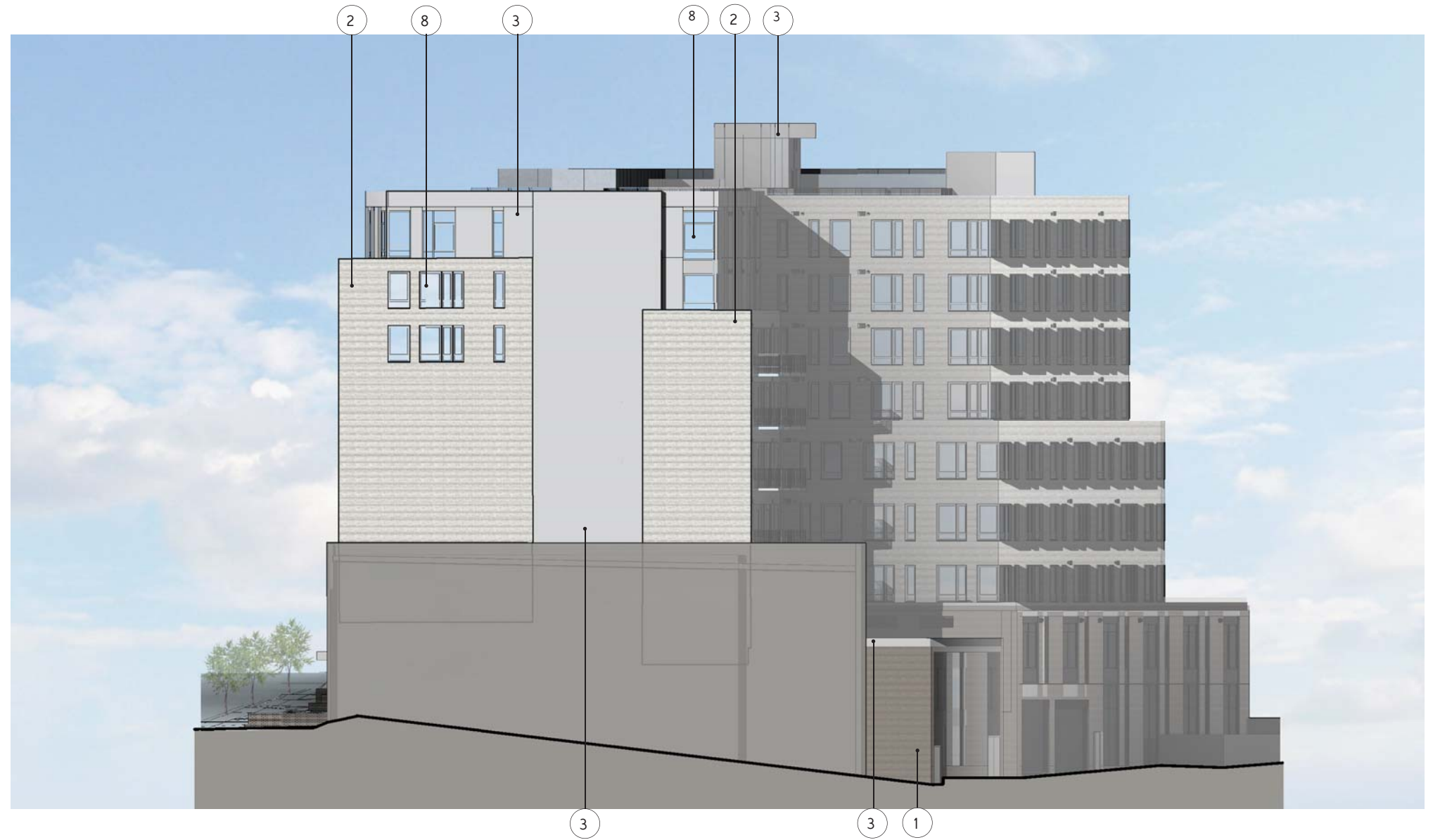
**A- 44**



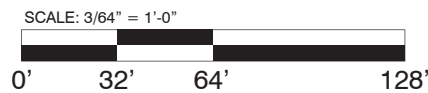
SCALE: 3/64" = 1'-0"



- MATERIALS**
- 1 - FRENCH GRAY WIRECUT FACE BRICK
  - 2 - BUFF WIRECUT FACE BRICK
  - 3 - COMPOSITE METAL PANEL
  - 4 - COMPOSITE METAL PROFILE
  - 8 - ALUMINUM PUNCHED WINDOW SYSTEM
  - 9 - ALUMINUM WINDOW WALL SYSTEM
  - 10 - ALUMINUM STOREFRONT SYSTEM WITH TRANSPARENT RETAIL GLASS
  - 14 - METAL PANEL REVEAL
  - 15 - GUARDRAIL WITH PERFORATED METAL INFILL PANEL
  - 19 - VEGETATED ROOF



**NORTH ELEVATION**



DATE:  
September 08, 2017  
SUPPLEMENTAL PRE-  
HEARING SUBMISSION

TITLE:  
BUILDING  
ELEVATION:  
NORTH

NUMBER:  
**A-45**

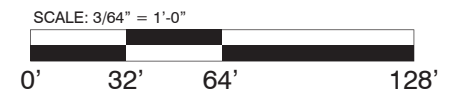




**MATERIALS**

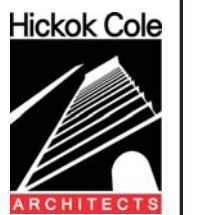
- 1 - FRENCH GRAY WIRECUT FACE BRICK
- 2 - BUFF WIRECUT FACE BRICK
- 3 - COMPOSITE METAL PANEL
- 4 - COMPOSITE METAL PROFILE
- 8 - ALUMINUM PUNCHED WINDOW SYSTEM
- 9 - ALUMINUM WINDOW WALL SYSTEM
- 10 - ALUMINUM STOREFRONT SYSTEM WITH TRANSPARENT RETAIL GLASS
- 14 - METAL PANEL REVEAL
- 15 - GUARDRAIL WITH PERFORATED METAL INFILL PANEL
- 19 - VEGETATED ROOF

**NORTH ELEVATION:  
SOUTH TOWER**



4620 WISCONSIN AVENUE NW

Circle K Square 1732 Washington DC 20016



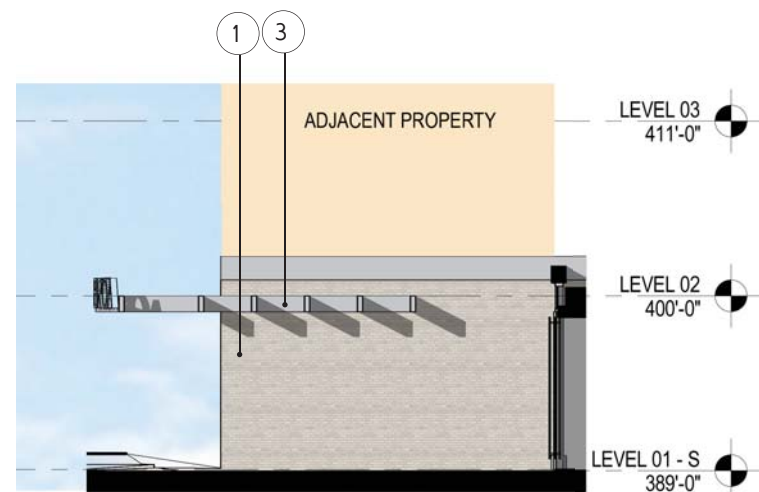
DATE: September 08, 2017

SUPPLEMENTAL PRE-HEARING SUBMISSION

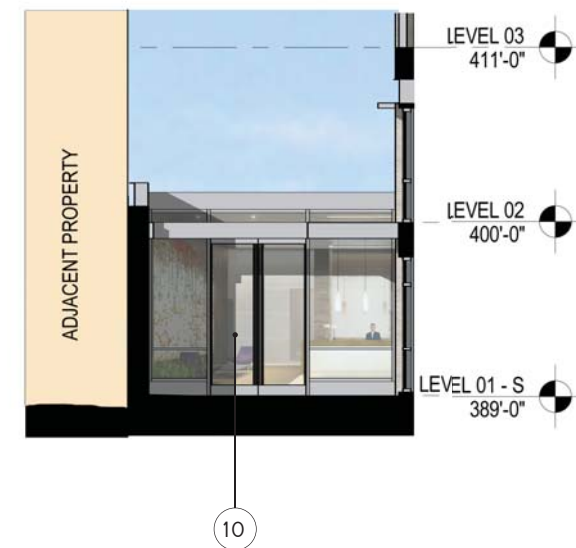
TITLE:  
BUILDING ELEVATION:  
NORTH AT SOUTH TOWER

NUMBER:  
**A-46**

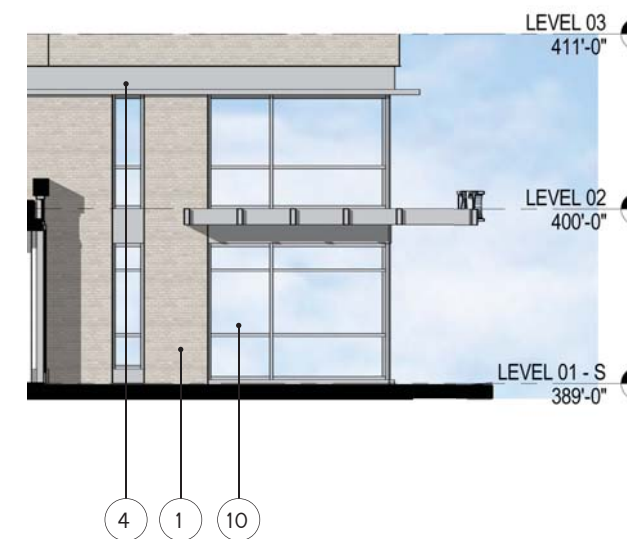
- MATERIALS**
- 1 - FRENCH GRAY WIRECUT FACE BRICK
  - 2 - BUFF WIRECUT FACE BRICK
  - 3 - COMPOSITE METAL PANEL
  - 4 - COMPOSITE METAL PROFILE
  - 8 - ALUMINUM PUNCHED WINDOW SYSTEM
  - 9 - ALUMINUM WINDOW WALL SYSTEM
  - 10 - ALUMINUM STOREFRONT SYSTEM WITH TRANSPARENT RETAIL GLASS



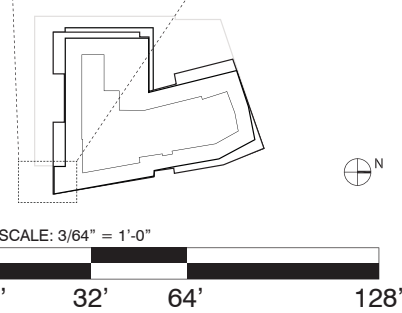
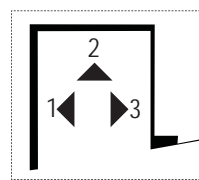
**1 - RESIDENTIAL COURT:  
NORTH**

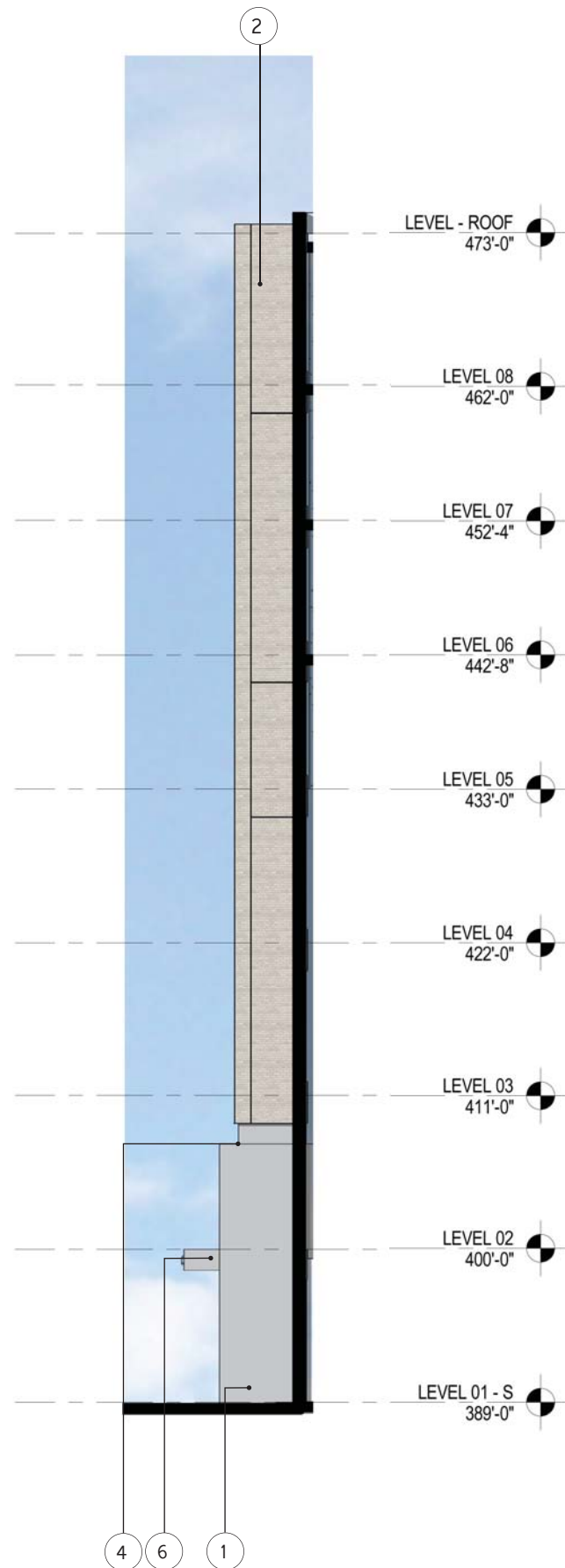


**2 - RESIDENTIAL COURT:  
EAST**



**3 - RESIDENTIAL COURT:  
SOUTH**

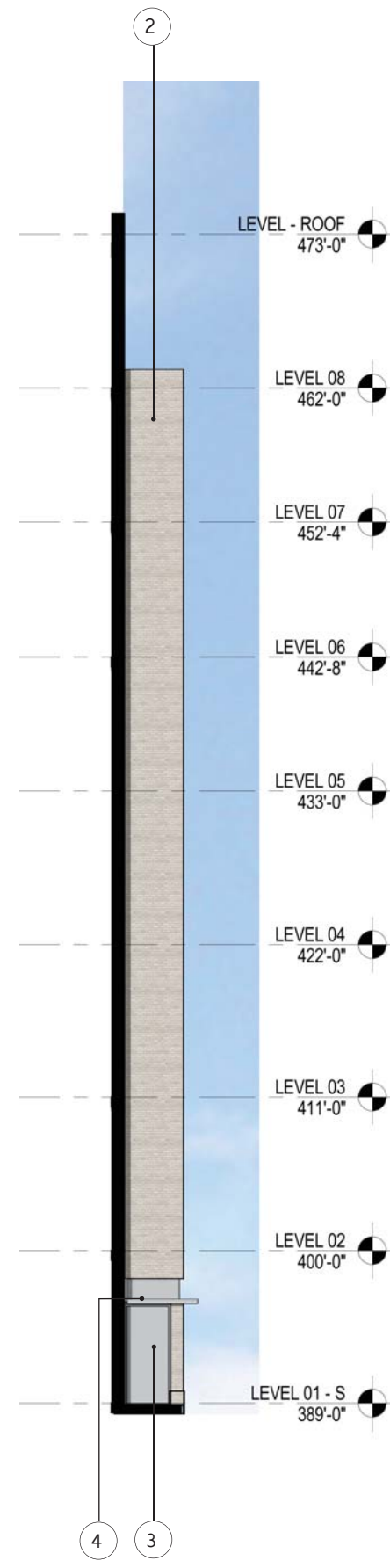




**1 - RETAIL ENTRY:  
NORTH**

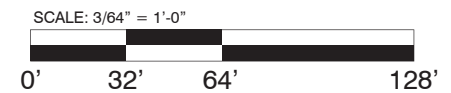
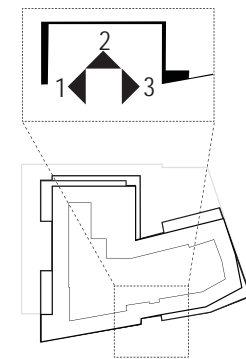


**2 - RETAIL  
ENTRY: EAST**



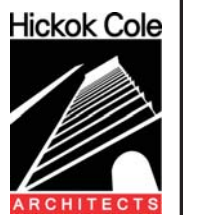
**3 - RETAIL  
ENTRY: SOUTH**

- MATERIALS**
- 1 - FRENCH GRAY WIRECUT FACE BRICK
  - 2 - BUFF WIRECUT FACE BRICK
  - 3 - COMPOSITE METAL PANEL
  - 4 - COMPOSITE METAL PROFILE
  - 8 - ALUMINUM PUNCHED WINDOW SYSTEM
  - 9 - ALUMINUM WINDOW WALL SYSTEM
  - 10 - ALUMINUM STOREFRONT SYSTEM WITH TRANSPARENT RETAIL GLASS



4620 WISCONSIN AVENUE NW

Square 1732 Washington DC 20016



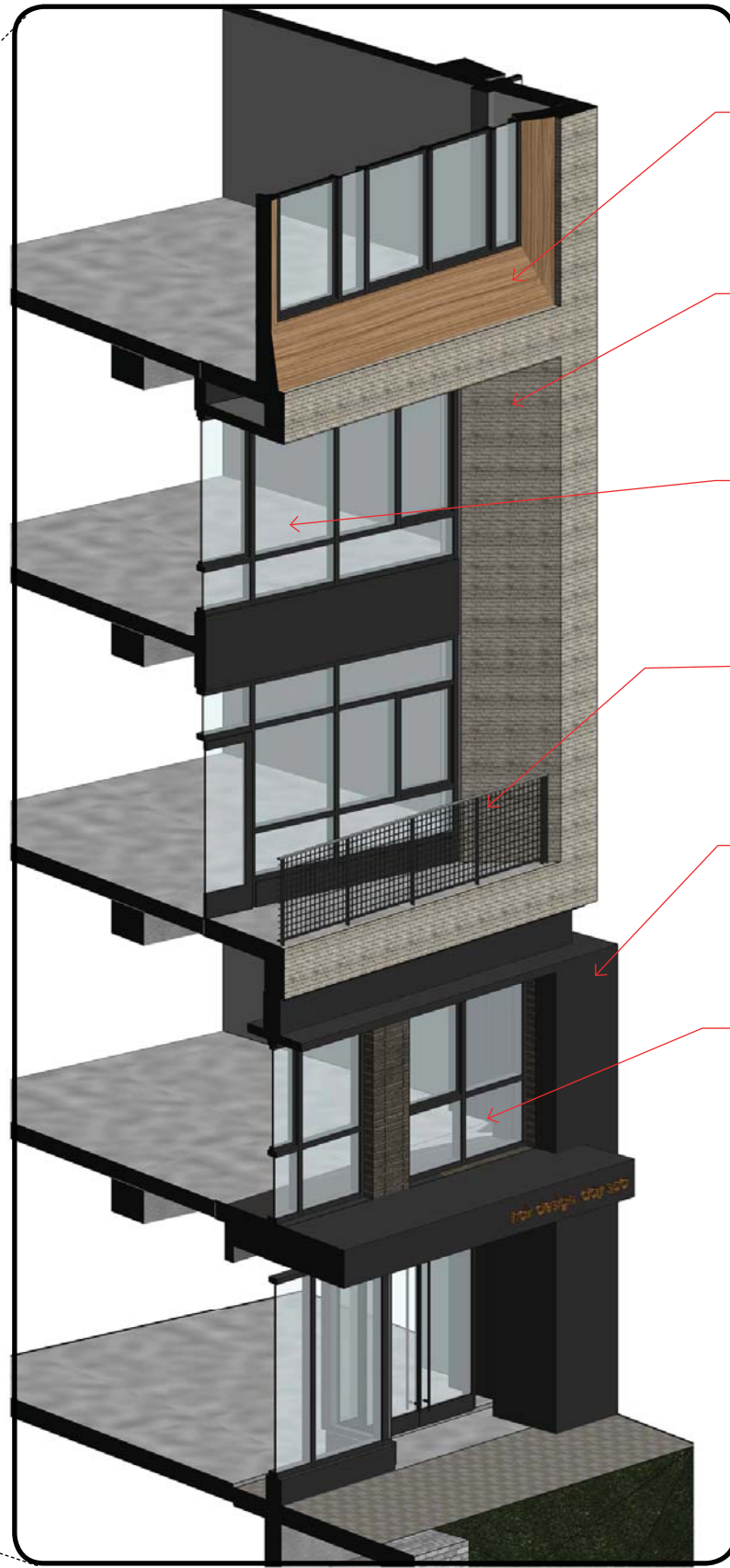
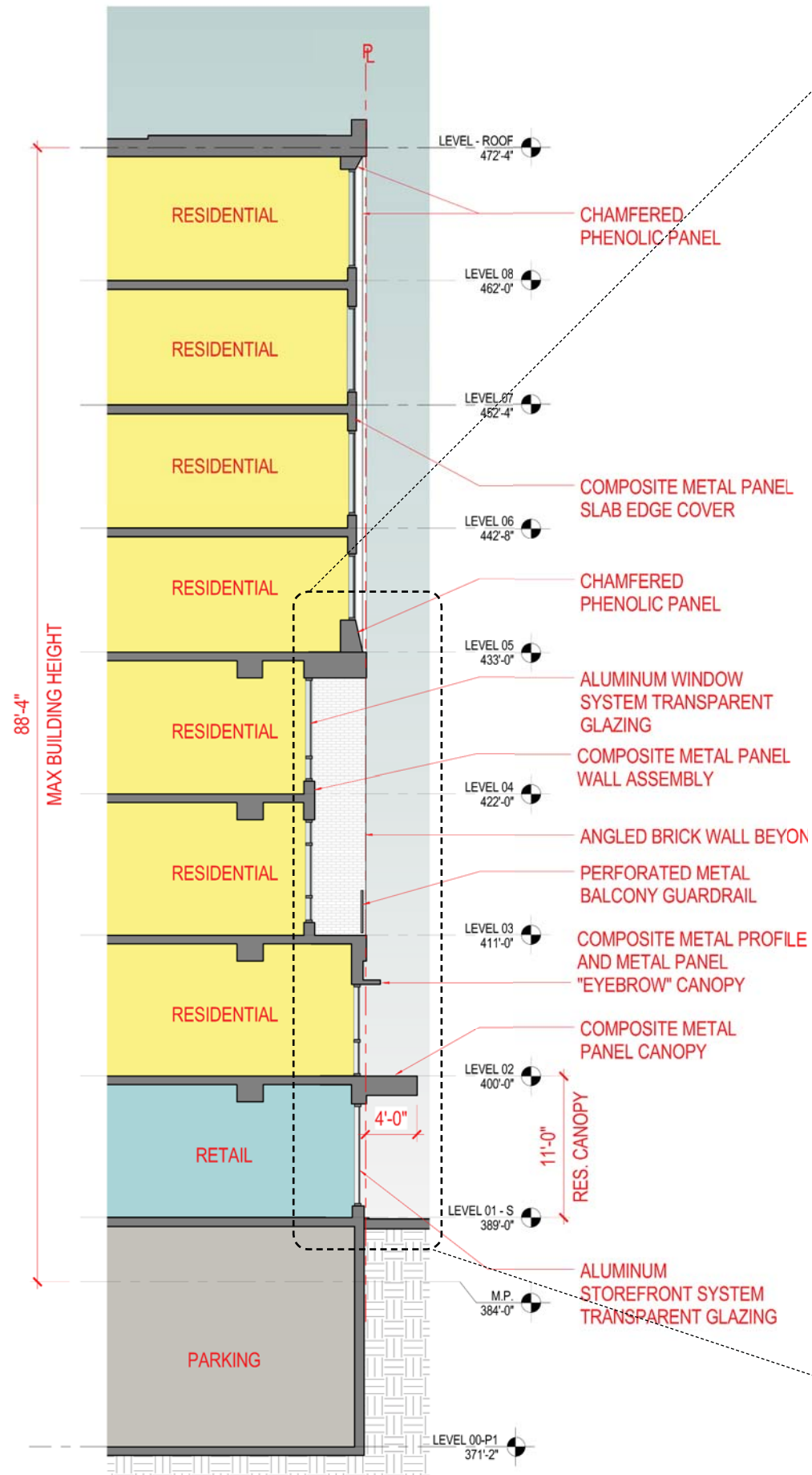
DATE: September 08, 2017

SUPPLEMENTAL PRE-HEARING SUBMISSION

TITLE: BUILDING ELEVATION: RESIDENTIAL ENTRY

NUMBER: A-48





PHENOLIC PANEL



BUFF BRICK



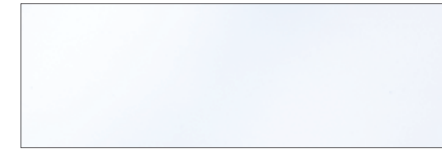
TRANSPARENT RES. GLAZING



PERFORATED METAL



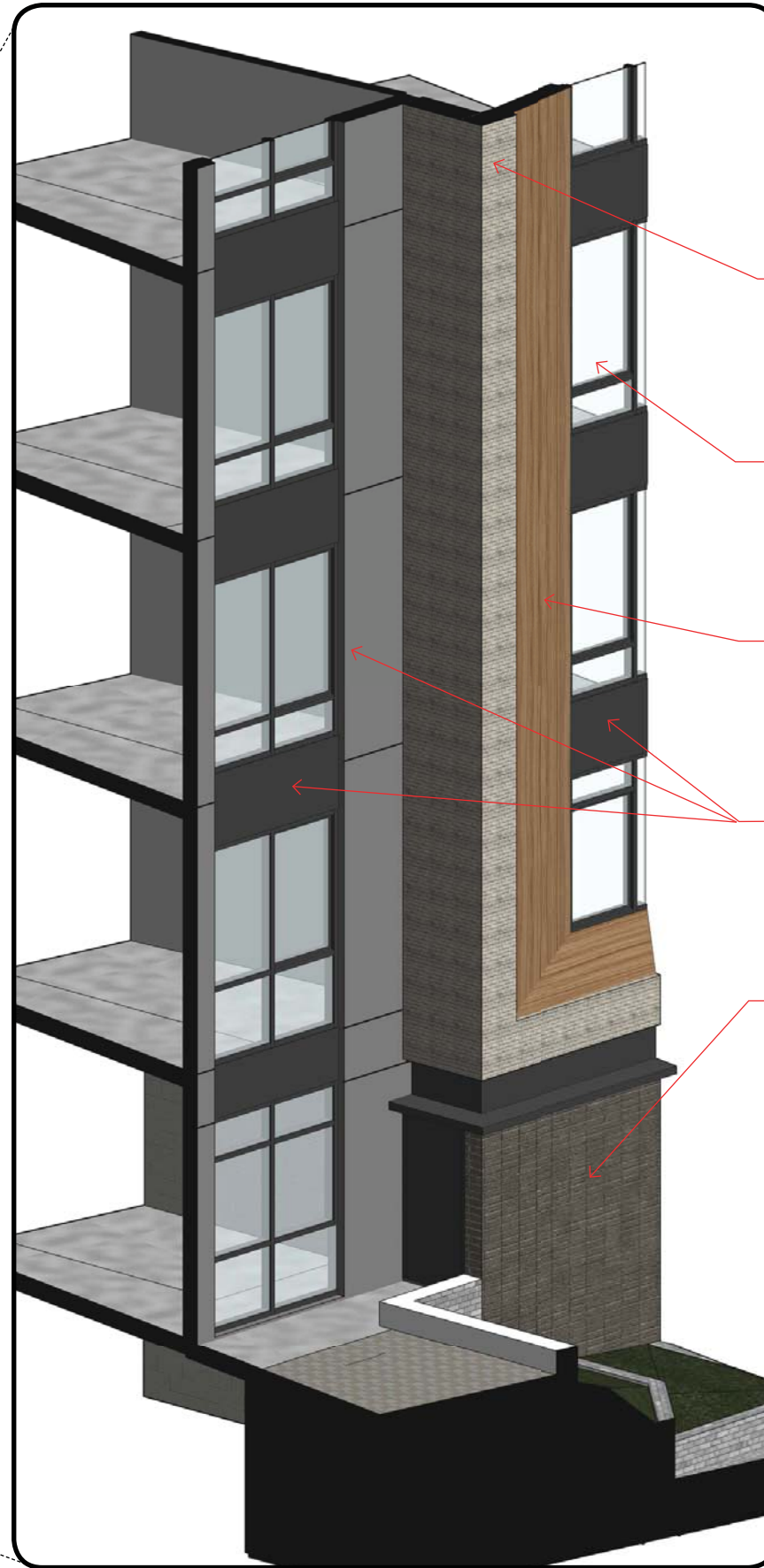
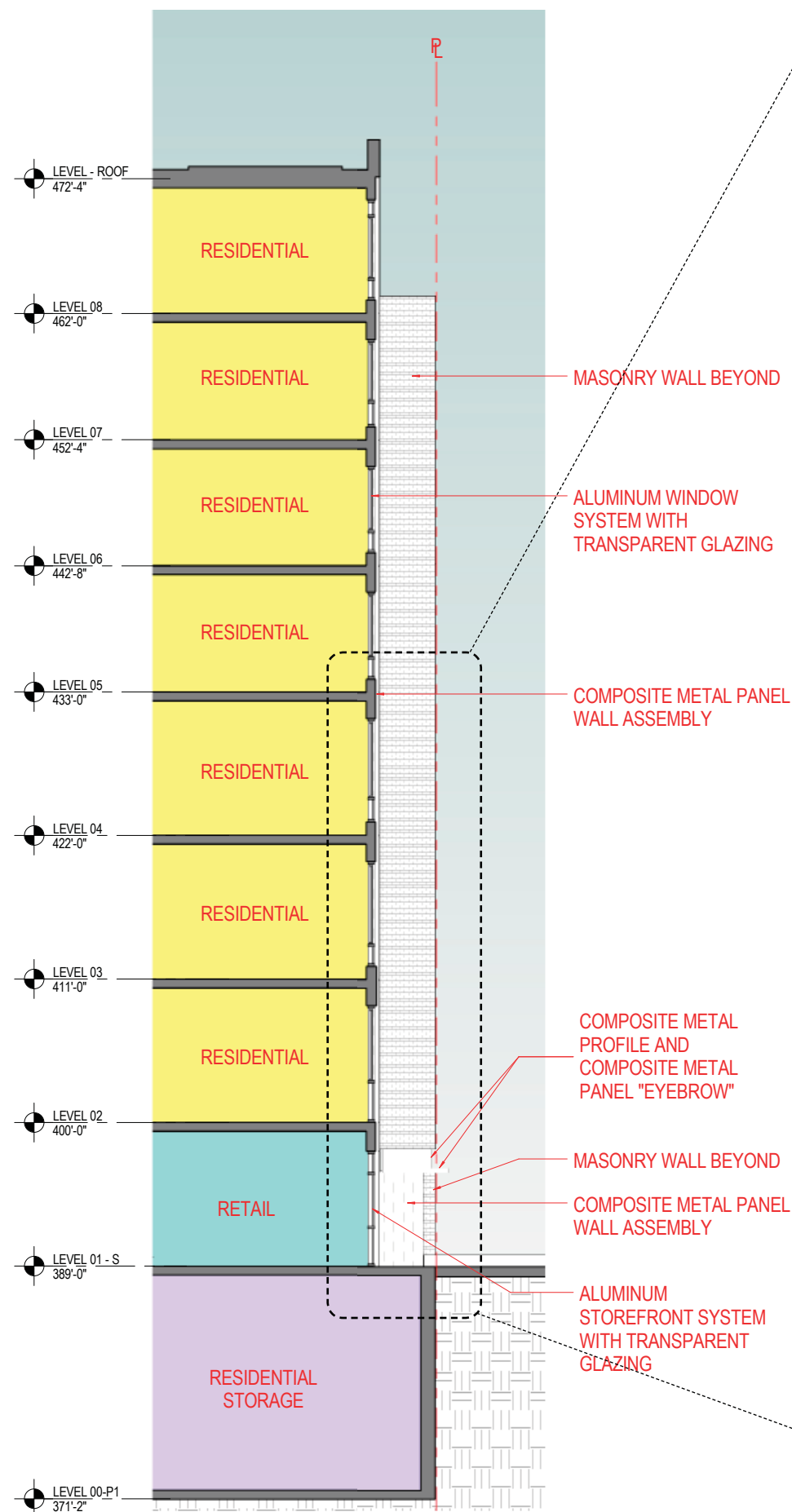
COMPOSITE METAL PANEL



TRANSPARENT RETAIL GLAZING



RETAIL BAY



BUFF BRICK



TRANSPARENT RES. GLAZING



PHENOLIC PANEL



COMPOSITE METAL PANEL

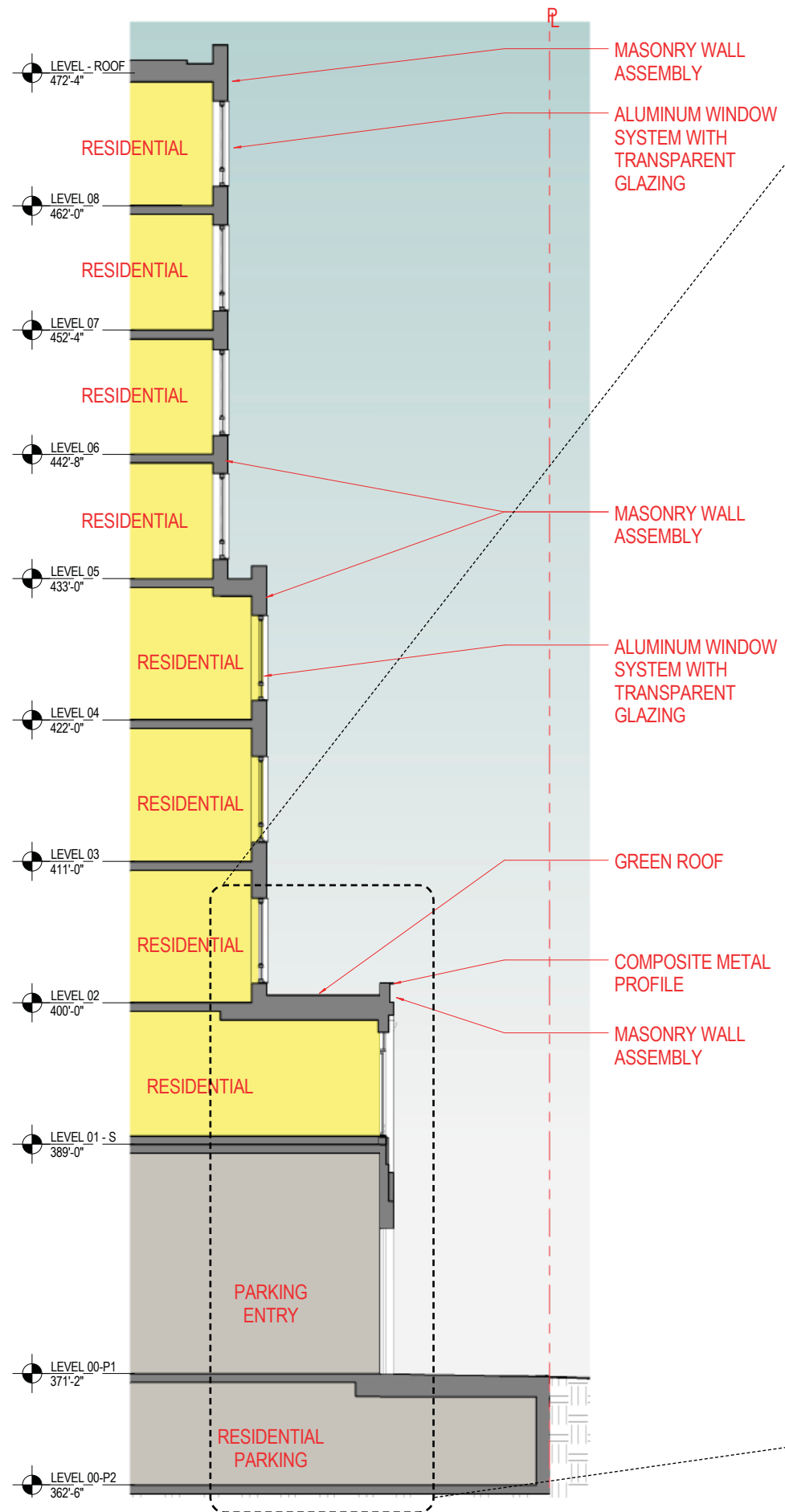


FRENCH GRAY BRICK



METAL PANEL 'ZIPPER'





BUFF BRICK



TRANSPARENT RES. GLAZING



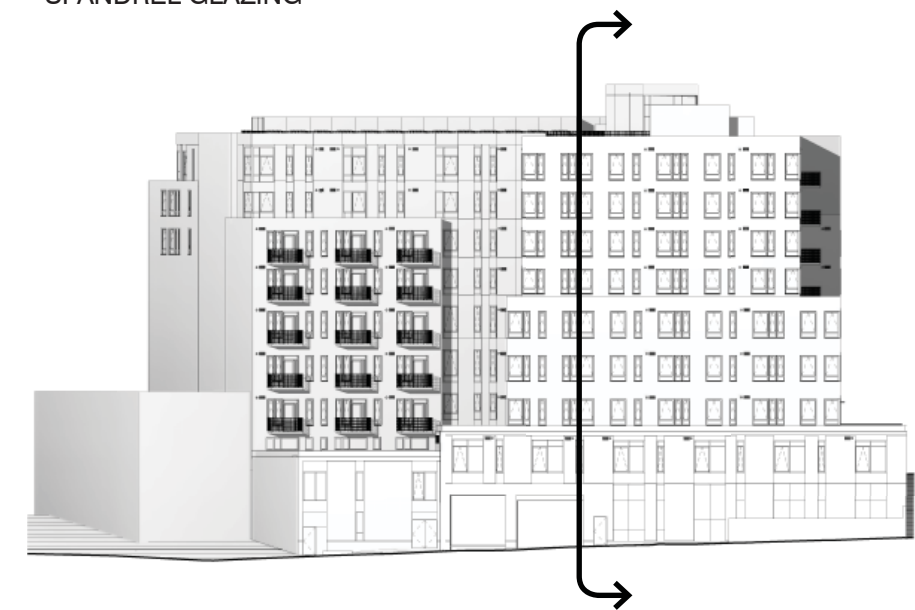
COMPOSITE METAL PANEL



FRENCH GRAY BRICK



SPANDREL GLAZING



WEST ELEVATION





SPANDREL GLAZING



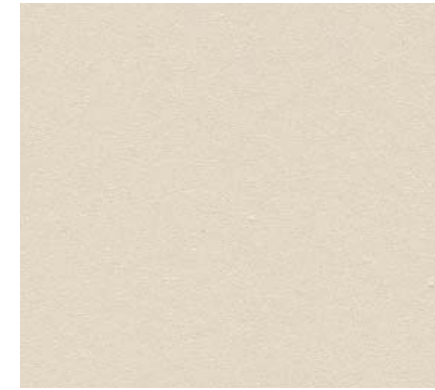
TRANSPARENT GLAZING - RESIDENTIAL



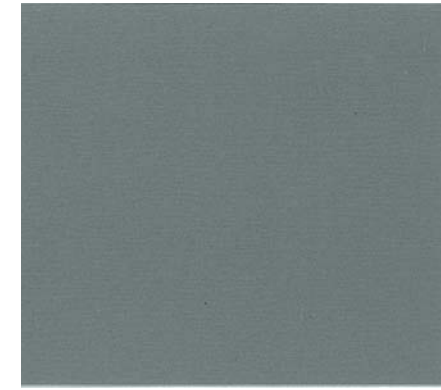
TRANSPARENT GLAZING - RETAIL



PHENOLIC PANEL - FRENCH WALNUT



COMPOSITE METAL PANEL - WASHINGTON WHITE



COMPOSITE METAL PANEL - MEDIUM GRAY



METAL LOUVER - DARK GRAY



BUFF BRICK



FRENCH GRAY BRICK



PERFORATED METAL - GUARDRAIL & INFILL PANEL



SOFT WHITE MORTAR



CHAMOIS MORTAR



4620 WISCONSIN AVENUE NW

Square 1732 Washington DC 20016



DATE: September 08, 2017

SUPPLEMENTAL PRE-HEARING SUBMISSION

TITLE: BUILDING MATERIALS

NUMBER: A-52

# MATERIALS



## LEED v2009 for New Construction

4620 Wisconsin Ave

September 5, 2017



4620 WISCONSIN AVENUE NW

Square 1732 Washington DC 20016

Hickok Cole



DATE: September 08, 2017

SUPPLEMENTAL PRE-HEARING SUBMISSION

TITLE: LEED CHECKLIST

NUMBER:

A-53

### 21 2 3 Sustainable Sites Possible Points: 26

Y	1	2	3	Prereq	Credit	Description	Points
				Prereq 1	Construction Activity Pollution Prevention		1
1				Credit 1	Site Selection		1
5				Credit 2	Development Density and Community Connectivity		5
1				Credit 3	Brownfield Redevelopment		1
6				Credit 4.1	Alternative Transportation—Public Transportation Access		6
1				Credit 4.2	Alternative Transportation—Bicycle Storage and Changing Rooms		1
3				Credit 4.3	Alternative Transportation—Low-Emitting and Fuel-Efficient Vehicles		3
			2	Credit 4.4	Alternative Transportation—Parking Capacity		2
	1			Credit 5.1	Site Development—Protect or Restore Habitat		1
1				Credit 5.2	Site Development—Maximize Open Space		1
1				Credit 6.1	Stormwater Design—Quantity Control		1
	1			Credit 6.2	Stormwater Design—Quality Control		1
1				Credit 7.1	Heat Island Effect—Non-roof		1
1				Credit 7.2	Heat Island Effect—Roof		1
			1	Credit 8	Light Pollution Reduction		1

### 6 2 2 Water Efficiency Possible Points: 10

Y	1	2	3	Prereq	Credit	Description	Points
				Prereq 1	Water Use Reduction—20% Reduction		4
2	2			Credit 1	Water Efficient Landscaping		4
			2	Credit 2	Innovative Wastewater Technologies		2
4				Credit 3	Water Use Reduction		4

### 10 8 17 Energy and Atmosphere Possible Points: 35

Y	1	2	3	Prereq	Credit	Description	Points
				Prereq 1	Fundamental Commissioning of Building Energy Systems		
				Prereq 2	Minimum Energy Performance		
				Prereq 3	Fundamental Refrigerant Management		
6	4	9		Credit 1	Optimize Energy Performance		19
1		6		Credit 2	On-Site Renewable Energy		7
2				Credit 3	Enhanced Commissioning		2
			2	Credit 4	Enhanced Refrigerant Management		2
1	2			Credit 5	Measurement and Verification		3
	2			Credit 6	Green Power		2

### 7 2 4 Materials and Resources Possible Points: 13

Y	1	2	3	Prereq	Credit	Description	Points
				Prereq 1	Storage and Collection of Recyclables		
2	1			Credit 1.1	Building Reuse—Maintain Existing Walls, Floors, and Roof (55%, 75%, 95%)		3
			1	Credit 1.2	Building Reuse—Maintain 50% of Interior Non-Structural Elements		1
2				Credit 2	Construction Waste Management		2
			1	Credit 3	Materials Reuse		1
1	1			Credit 4	Recycled Content		2
2				Credit 5	Regional Materials		2
			1	Credit 6	Rapidly Renewable Material		1
			1	Credit 7	Certified Wood		1

### 9 1 5 Indoor Environmental Quality Possible Points: 12

Y	1	2	3	Prereq	Credit	Description	Points
				Prereq 1	Minimum Indoor Air Quality Performance		
				Prereq 2	Environmental Tobacco Smoke (ETS) Control		
1				Credit 1	Outdoor Air Delivery Monitoring		1
			1	Credit 2	Increased Ventilation		1
1				Credit 3.1	Construction IAQ Management Plan—During Construction		1
			1	Credit 3.2	Construction IAQ Management Plan—Before Occupancy		1
1				Credit 4.1	Low-Emitting Materials—Adhesives and Sealants		1
1				Credit 4.2	Low-Emitting Materials—Paints and Coatings		1
1				Credit 4.3	Low-Emitting Materials—Flooring Systems		1
			1	Credit 4.4	Low-Emitting Materials—Composite Wood and Agrifiber Products		1
	1			Credit 5	Indoor Chemical and Pollutant Source Control		1
1				Credit 6.1	Controllability of Systems—Lighting Controls		1
1				Credit 6.2	Controllability of Systems—Thermal Comfort		1
1				Credit 7.1	Thermal Comfort—Design		1
			1	Credit 7.2	Thermal Comfort—Verification		1
			1	Credit 8.1	Daylight and Views—Daylight		1
1				Credit 8.2	Daylight and Views—Views		1

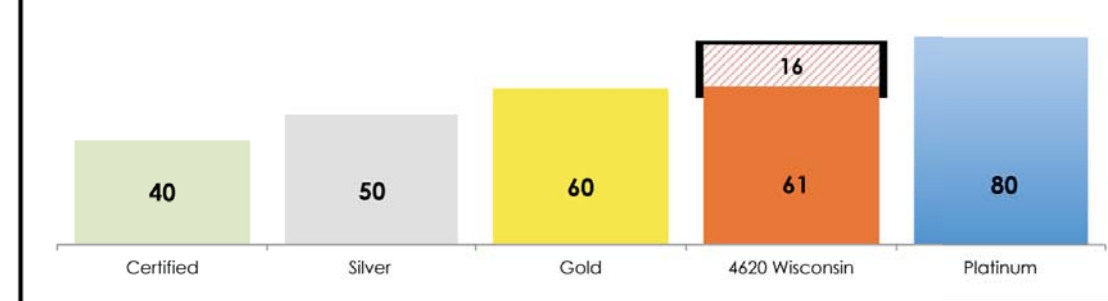
### 6 0 0 Innovation and Design Process Possible Points: 6

Y	1	2	3	Credit	Description	Points
1				Credit 1.1	Innovation in Design: Exemplary Performance SSc4.1	1
1				Credit 1.2	Innovation in Design: Exemplary Performance SSc7.1	1
1				Credit 1.3	Innovation in Design: Exemplary Performance SSc2	1
1				Credit 1.4	Innovation in Design: Integrated Pest Management	1
1				Credit 1.5	Innovation in Design: Green Housekeeping	1
1				Credit 2	LEED Accredited Professional	1

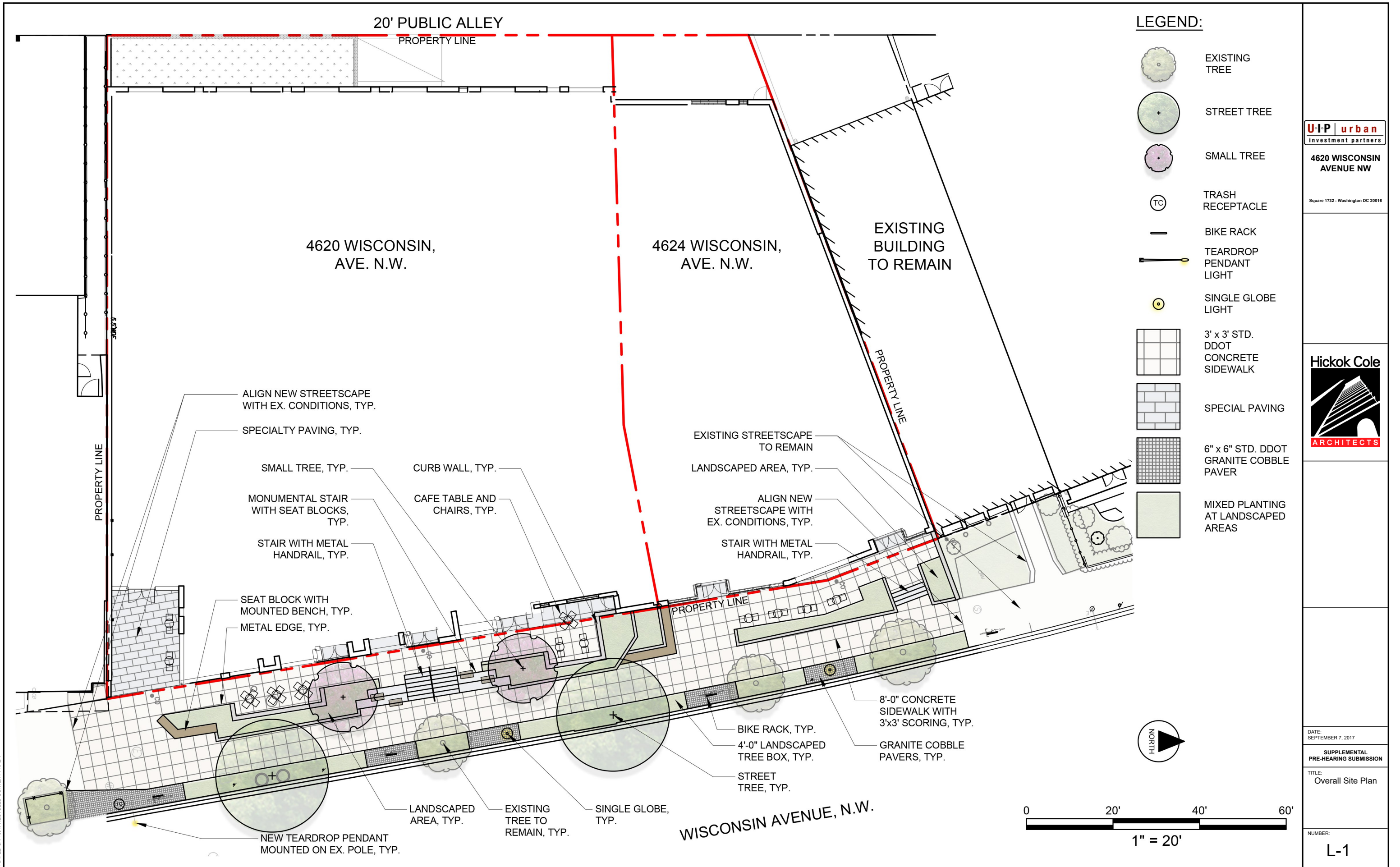
### 2 1 2 Regional Priority Credits (20024) Possible Points: 4

Y	1	2	3	Credit	Description	Points
			1	Credit 1.1	Regional Priority: EAc1 40% new/ 36% existing	1
1				Credit 1.2	Regional Priority: SSc6.1	1
			1	Credit 1.3	Regional Priority: SSc5.1	1
1			1	Credit 1.4	Regional Priority: EAc2 (1%), WEc2, or MRc1.1(75%)	1

### 61 16 33 Total Possible Points: 110








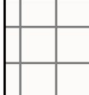
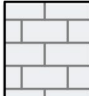
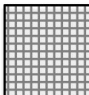







PRINTED ON 100% RECYCLED CONTENT PAPER

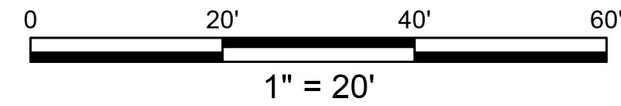
**LEGEND:**

-  EXISTING TREE
-  STREET TREE
-  SMALL TREE
-  TRASH RECEPTACLE
-  BIKE RACK
-  TEARDROP PENDANT LIGHT
-  SINGLE GLOBE LIGHT
-  3' x 3' STD. DDOT CONCRETE SIDEWALK
-  SPECIAL PAVING
-  6" x 6" STD. DDOT GRANITE COBBLE PAVER
-  MIXED PLANTING AT LANDSCAPED AREAS

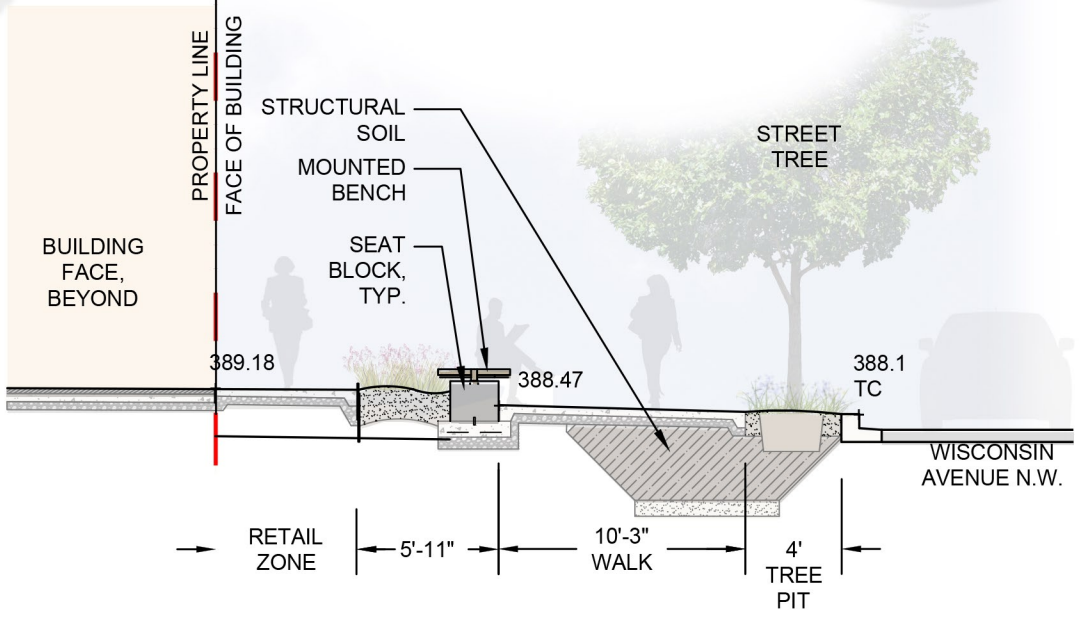
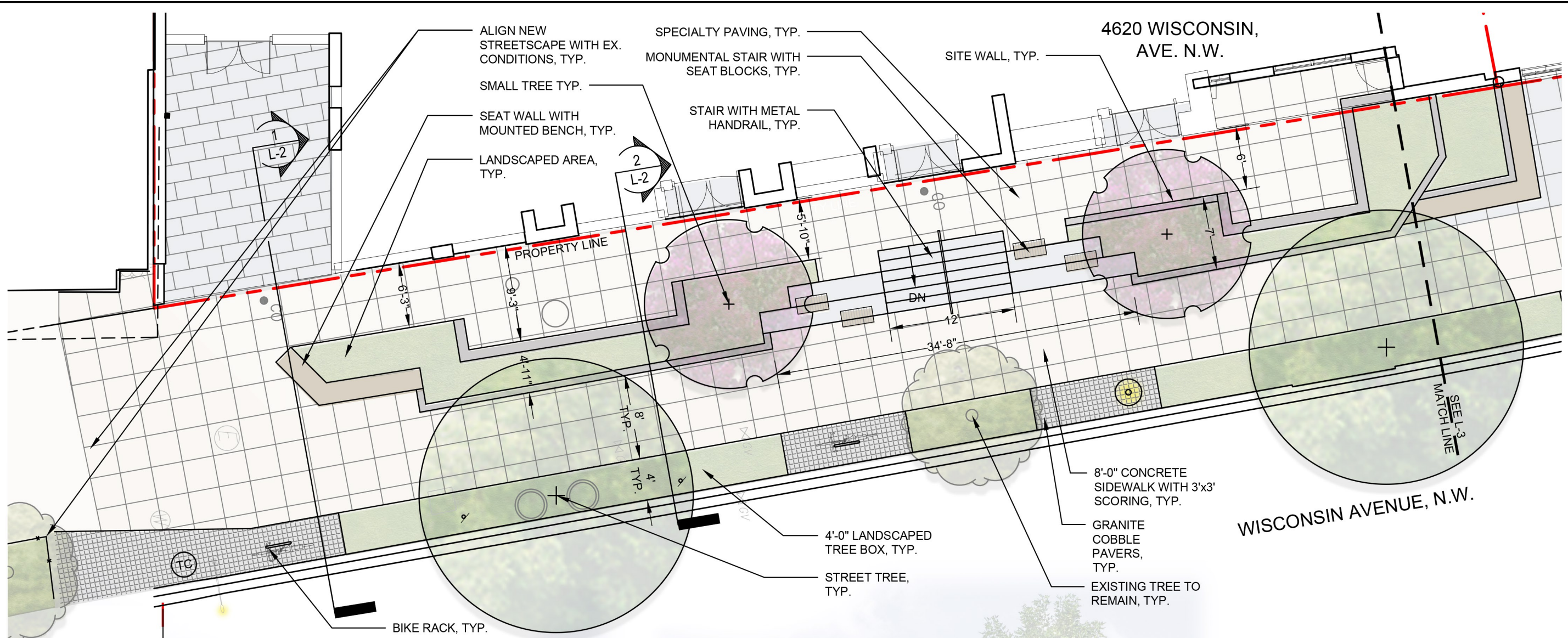
**U-I-P urban**  
investment partners  
**4620 WISCONSIN AVENUE NW**  
Square 1732 - Washington DC 20016

**Hickok Cole**  
  
**ARCHITECTS**

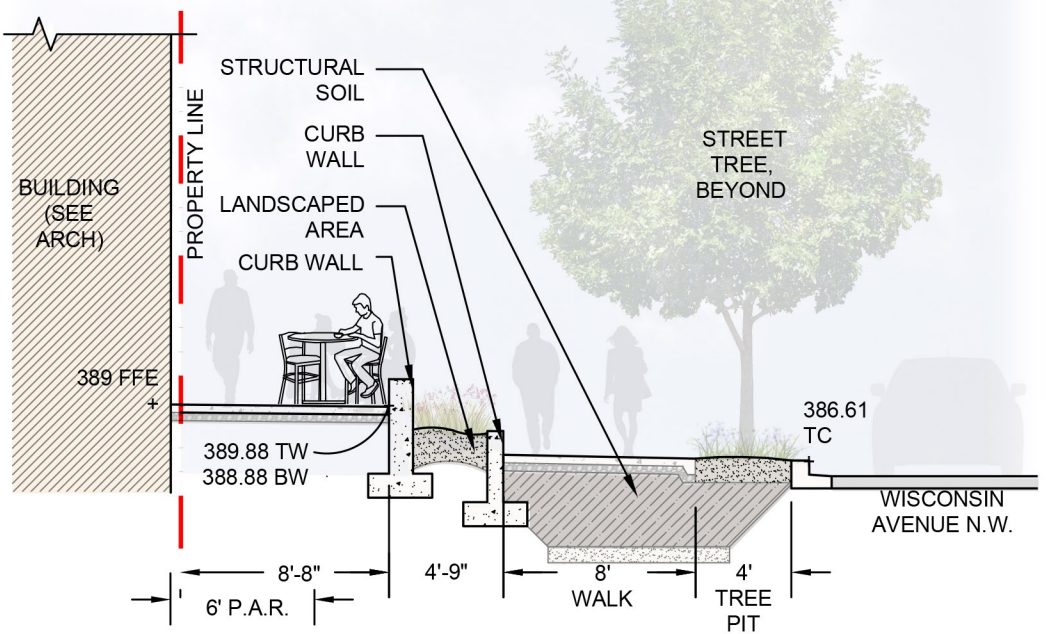
DATE: SEPTEMBER 7, 2017  
SUPPLEMENTAL PRE-HEARING SUBMISSION  
TITLE: Overall Site Plan  
NUMBER: **L-1**



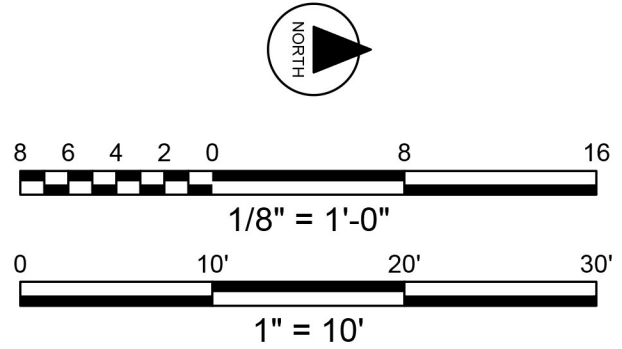




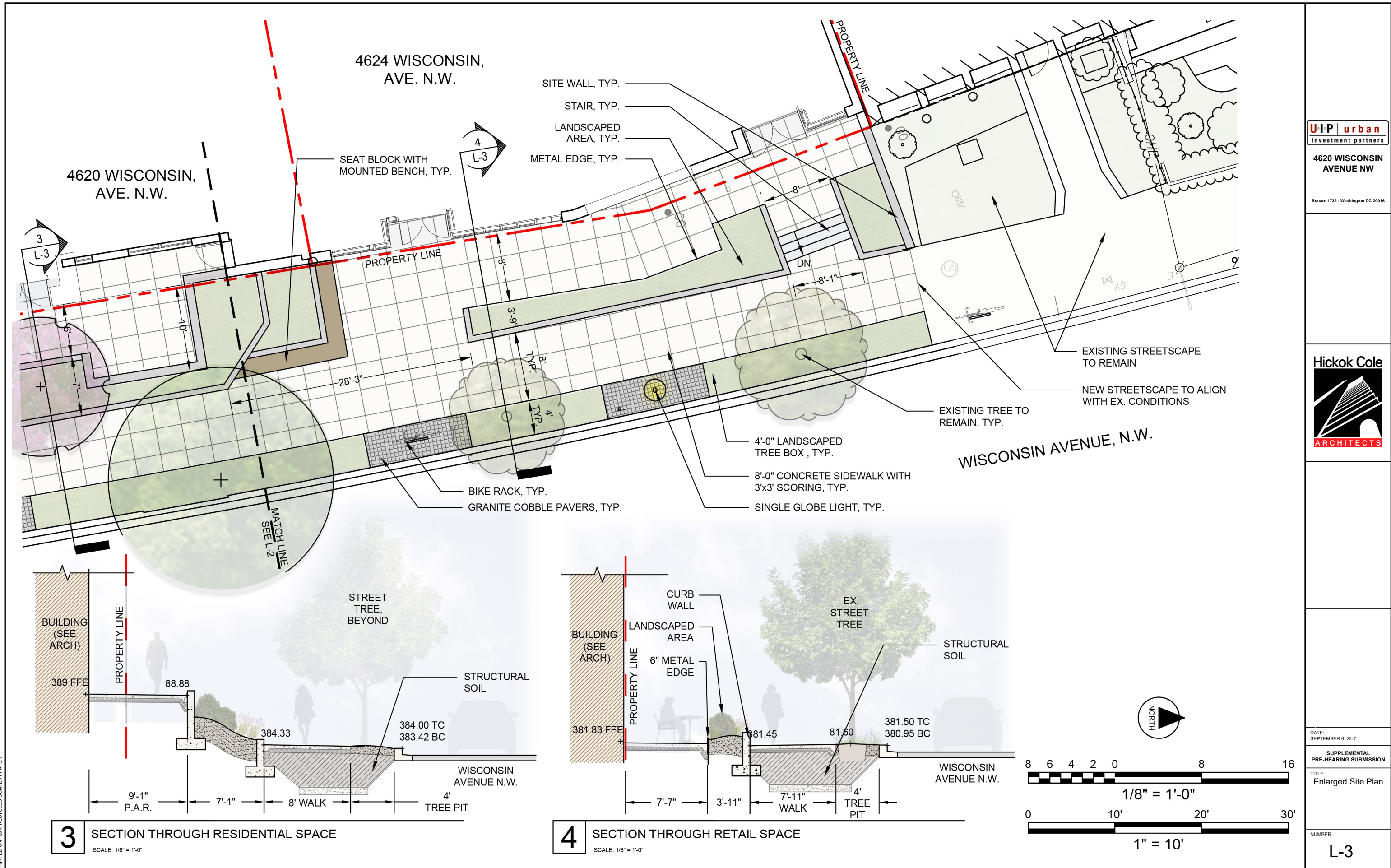
**1** SECTION THROUGH RESIDENTIAL SPACE  
SCALE: 1/8" = 1'-0"



**2** SECTION THROUGH RETAIL SPACE  
SCALE: 1/8" = 1'-0"







PRINTED ON 100% RECYCLED CONTENT PAPER